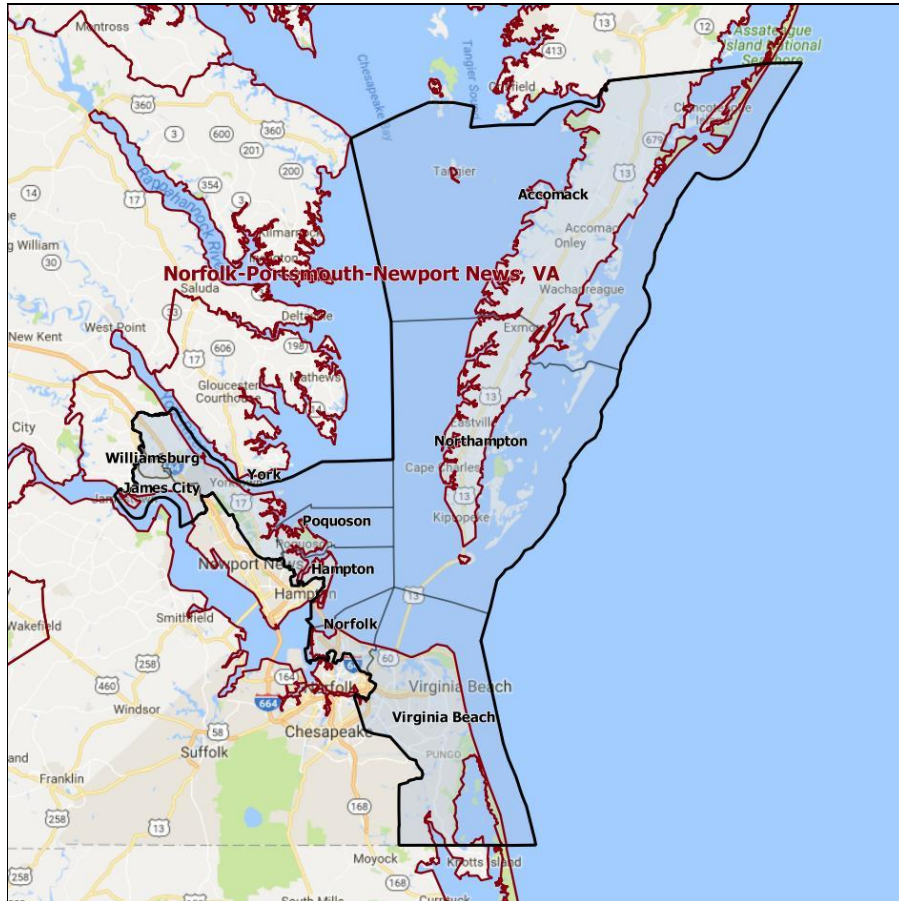


MARCH INTO '18

VA-02 Fact Sheet



Recent Election Results Two-Way Vote

2016 Pres	2016 House	2014 Senate	2014 House	2013 Gov	2012 Pres	2012 Senate	2012 House	2009 Gov	2008 Pres
48.2%	38.5%	47.3%	39.1%	48.5%	48.8%	50.3%	44.2%	36.5%	49.3%

Demographics

CVAP AfAm	CVAP AAPI	CVAP Hispanic	Age 18-35	Age 65+	Urban	Suburban	Rural	Mean Income	BA Degree or Higher
19.3%	4.5%	4.9%	27.3%	12.4%	23.4%	56.2%	20.4%	\$80,582	32.06%



MARCH INTO '18

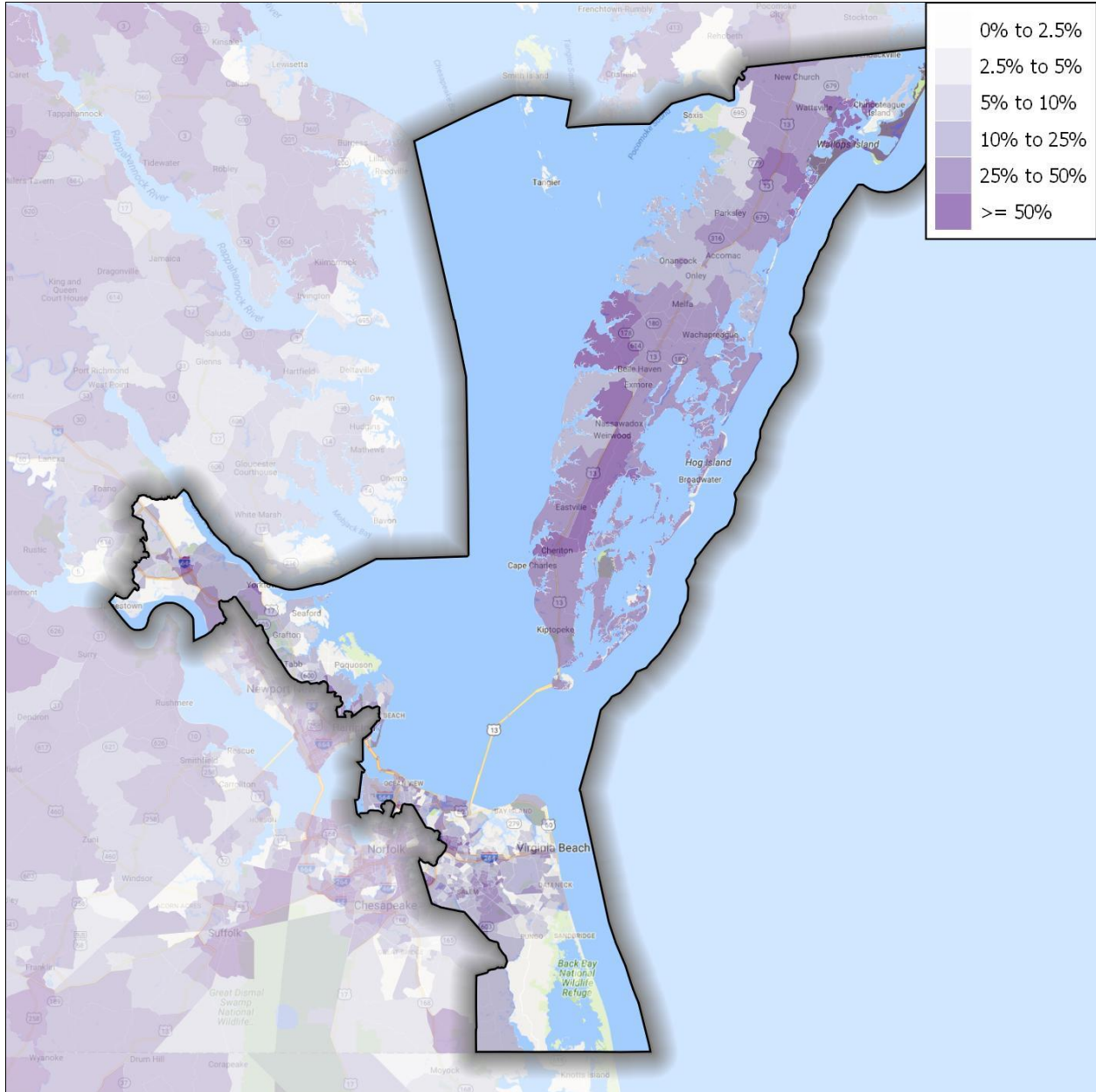
Results / Voter Registration by Geography

County	2016 Pres.	2016 Cong.	Registered Voters	% of Total
Accomack	44.0%	37.4%	24,527	5.1%
Hampton (City)	49.2%	41.9%	22,525	4.6%
James City	52.6%	43.7%	12,649	2.6%
Norfolk (City)	56.5%	46.2%	42,249	8.7%
Northampton	54.8%	45.8%	9,240	1.9%
Poquoson (City)	23.9%	18.0%	9,004	1.9%
Virginia Beach (City)	48.1%	37.7%	307,257	63.3%
Williamsburg (City)	73.0%	63.5%	12,018	2.5%
York	40.8%	32.6%	45,836	9.4%

MARCH INTO '18

Demographic Maps

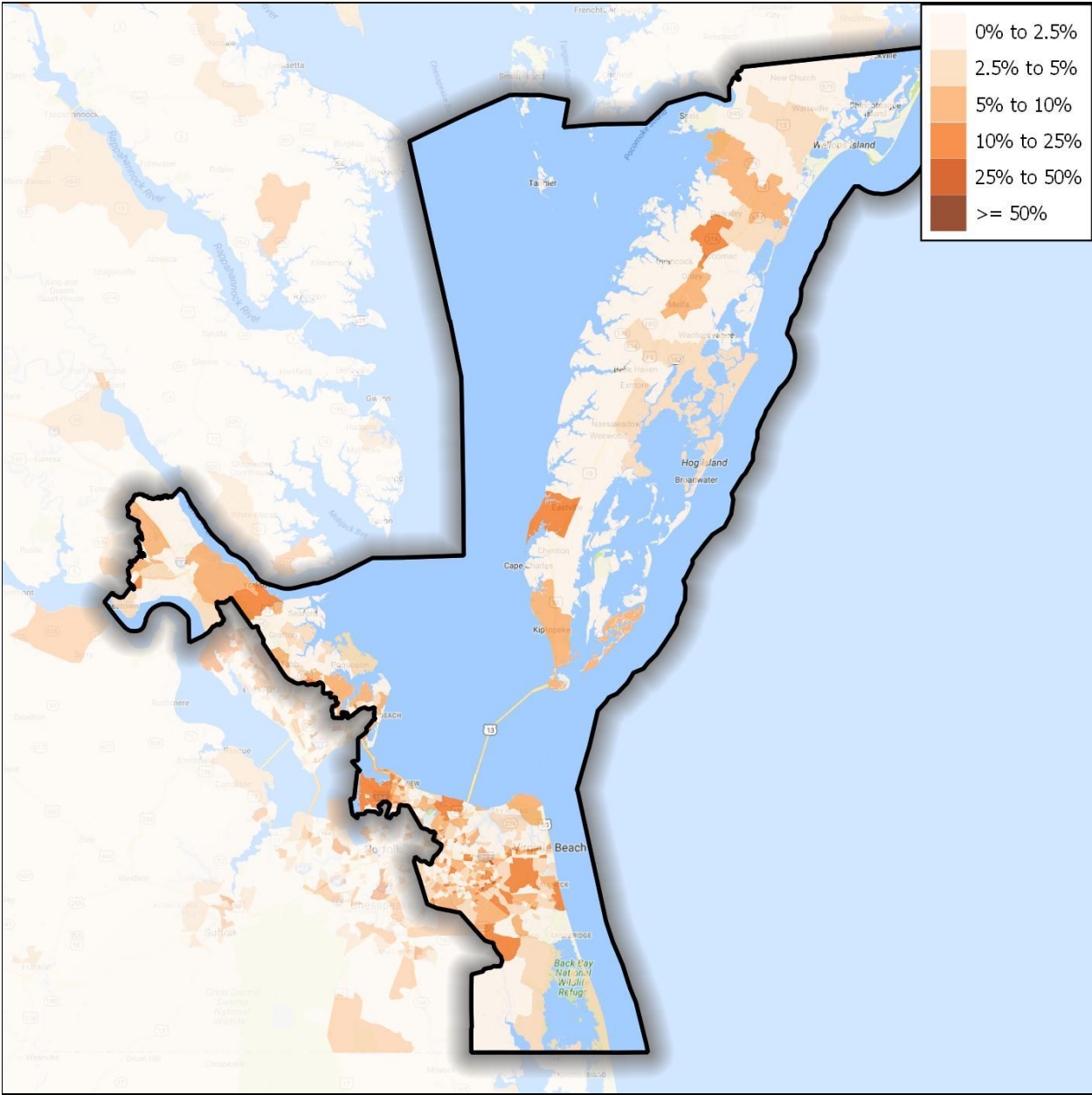
African American Voting Age Population





MARCH INTO '18

Hispanic/Latino Voting Age Population



MARCH INTO '18

AAPI Voting Age Population

