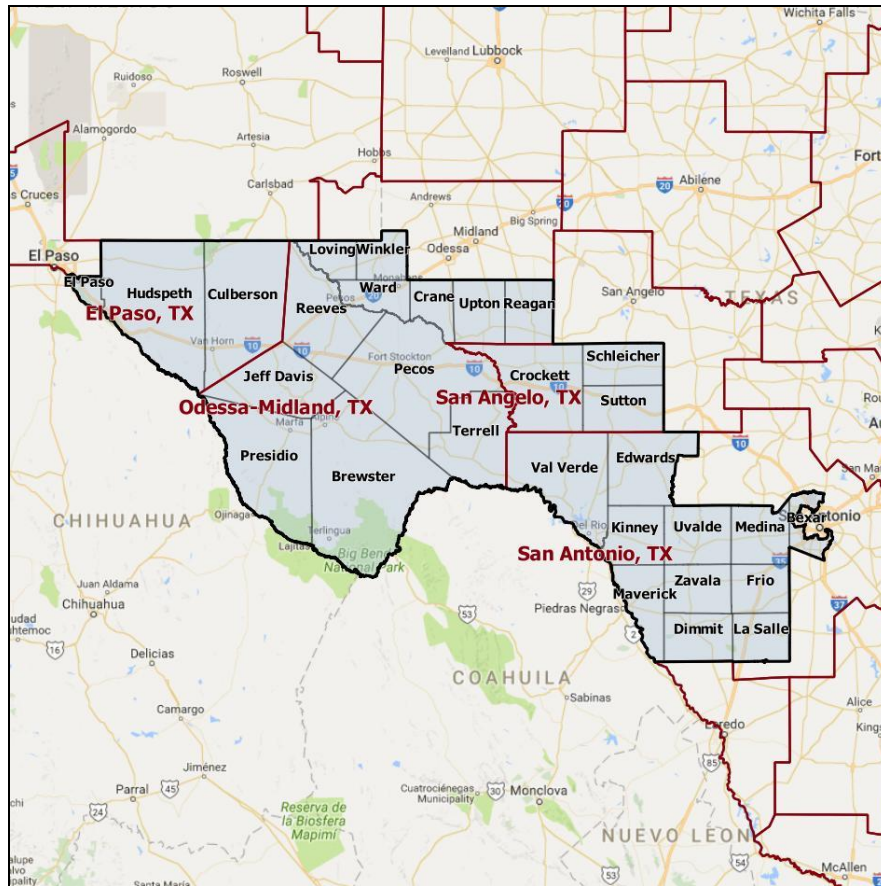


MARCH INTO '18

TX-23 Fact Sheet



Recent Election Results Two-Way Vote

| 2016 Pres | 2016 House | 2014 Senate | 2014 Gov | 2014 House | 2012 Pres | 2012 House | 2012 Senate | 2010 Gove | 2008 Pres |
|--------------|---------------|----------------|-------------|---------------|--------------|---------------|----------------|--------------|--------------|
| 51.8% | 49.3% | 39.3% | 43.0% | 48.9% | 48.6% | 52.5% | 46.7% | 46.8% | 50.3% |

Demographics

| CVAP AfAm | CVAP AAPI | CVAP Hispanic | Age 18-35 | Age 65+ | Urban | Suburban | Rural | Mean Income | BA Degree or Higher |
|--------------|--------------|------------------|--------------|------------|-------|----------|-------|----------------|------------------------|
| 4.0% | 1.3% | 61.2% | 22.8% | 10.6% | 4.1% | 46.9% | 49.0% | \$51,528 | 21.3% |



MARCH INTO '18

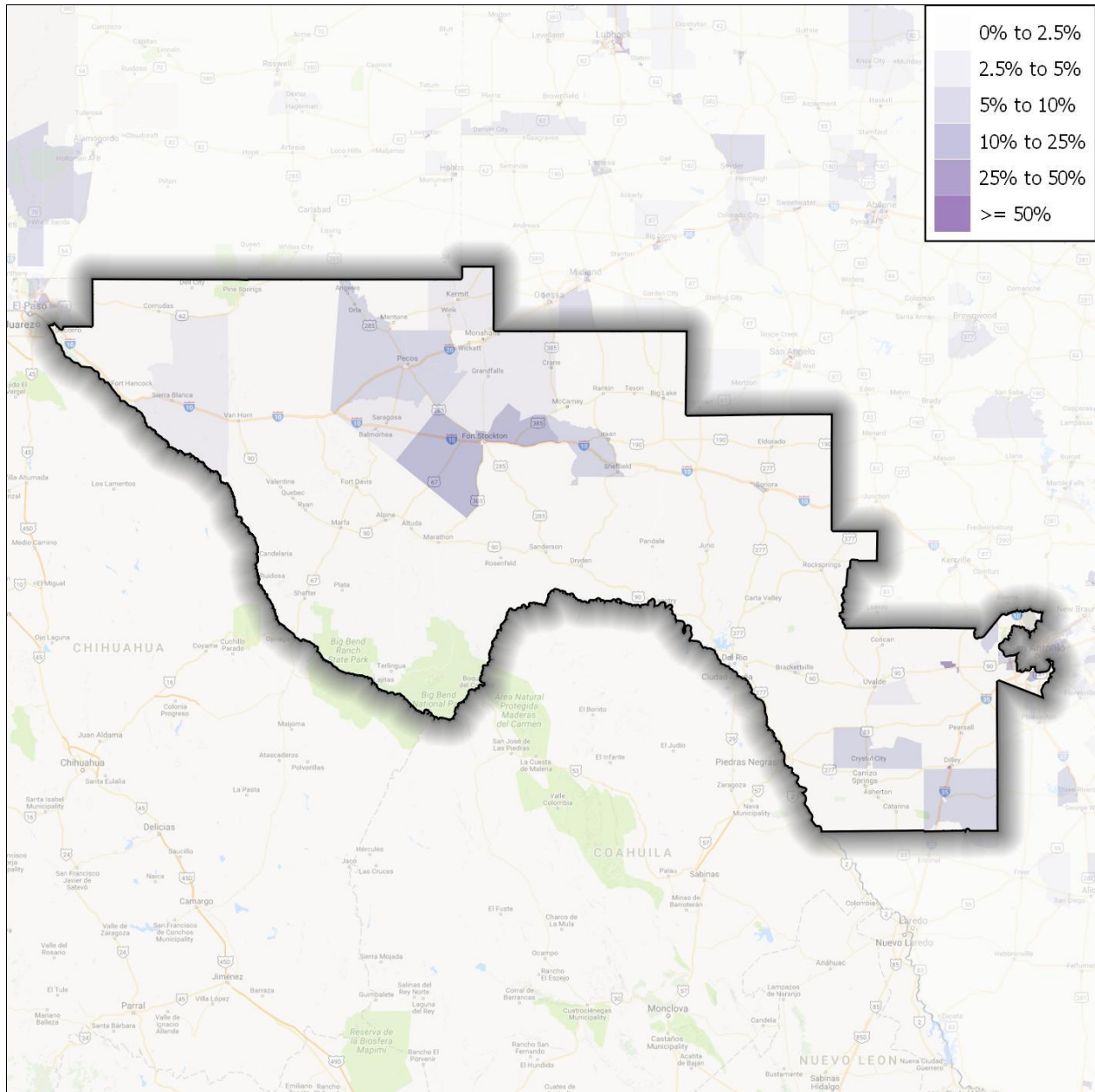
Results / Voter Registration by Geography

| County | 2016 Pres. | 2016 Cong. | Registered Voters | % of Total |
|------------|------------|------------|-------------------|------------|
| Bexar | 49.1% | 43.3% | 185,872 | 43.6% |
| Brewster | 47.4% | 52.7% | 7,347 | 1.7% |
| Crane | 22.2% | 23.9% | 2,604 | 0.6% |
| Crockett | 27.5% | 34.6% | 2,523 | 0.6% |
| Culberson | 61.9% | 66.3% | 1,740 | 0.4% |
| Dimmit | 69.0% | 68.6% | 7,335 | 1.7% |
| Edwards | 28.9% | 29.7% | 1,504 | 0.4% |
| El Paso | 84.3% | 84.3% | 46,914 | 11% |
| Frio | 56.8% | 51.9% | 9,096 | 2.1% |
| Hudspeth | 39.2% | 46.3% | 1,812 | 0.4% |
| Jeff Davis | 37.8% | 44.7% | 1,633 | 0.4% |
| Kinney | 32.9% | 33.7% | 2,237 | 0.5% |
| La Salle | 56.1% | 59.8% | 3,498 | 0.8% |
| Loving | 6.5% | 14.3% | 111 | 0.0% |
| Maverick | 78.7% | 77.8% | 30,518 | 7.2% |
| Medina | 27.7% | 26.0% | 29,996 | 7.0% |
| Pecos | 38.6% | 43.6% | 8,176 | 1.9% |
| Presidio | 69.1% | 70.1% | 4,686 | 1.1% |
| Reagan | 19.1% | 20.6% | 1,870 | 0.4% |
| Reeves | 53.9% | 59.8% | 7,045 | 1.7% |
| Schleicher | 20.2% | 21.7% | 1,815 | 0.4% |
| Sutton | 22.6% | 23.1% | 2,476 | 0.6% |
| Terrell | 32.7% | 44.3% | 699 | 0.2% |
| Upton | 22.1% | 24.5% | 2,276 | 0.5% |
| Uvalde | 44.4% | 44.7% | 16,706 | 3.9% |
| Val Verde | 54.2% | 54.6% | 27,403 | 6.4% |
| Ward | 23.5% | 26.2% | 6,436 | 1.5% |
| Winkler | 23.0% | 22.0% | 3,782 | 0.9% |
| Zavala | 79.2% | 80.0% | 8,452 | 2.0% |

MARCH INTO '18

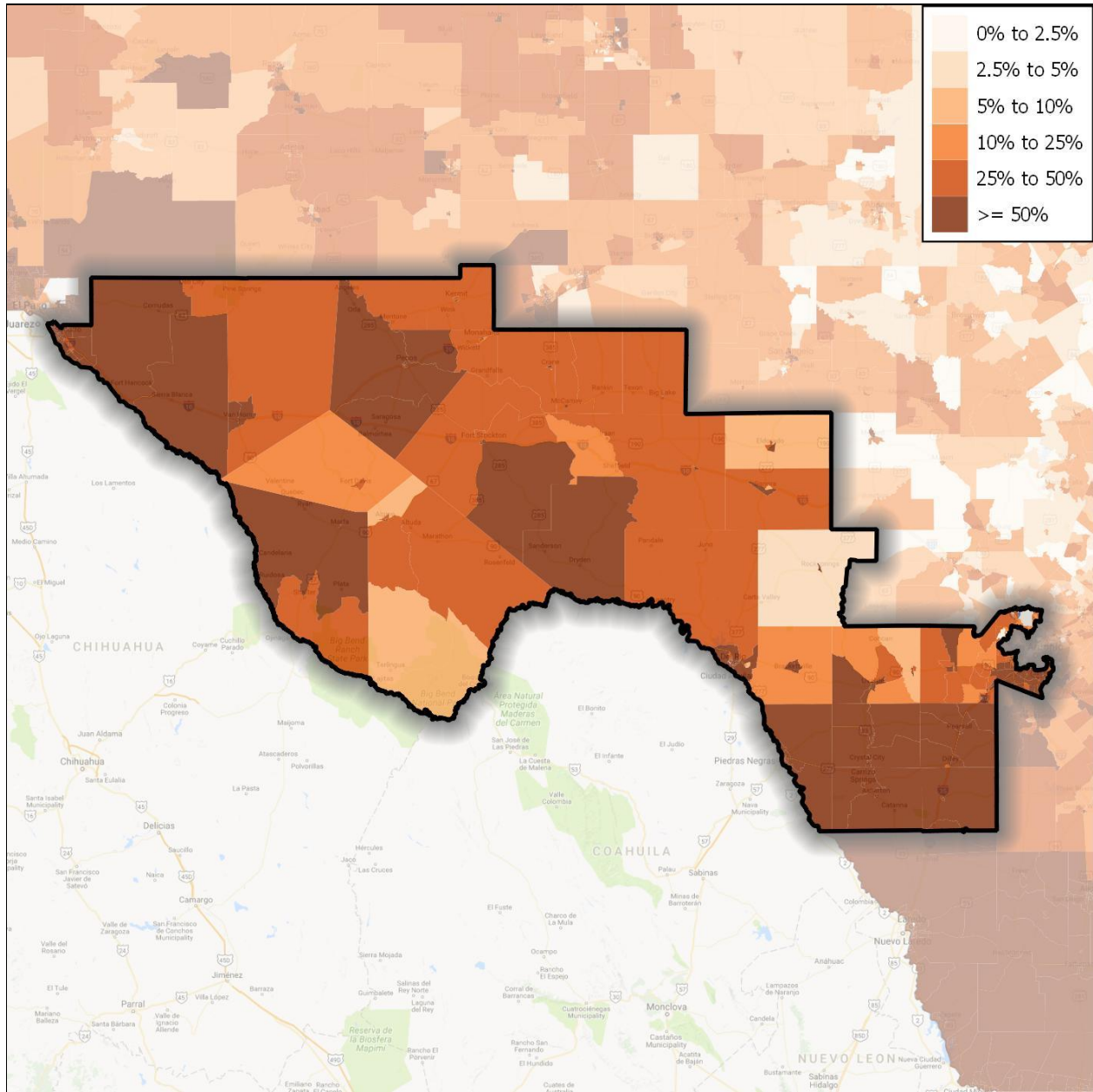
Demographic Maps

African American Voting Age Population



MARCH INTO '18

Hispanic/Latino Voting Age Population



MARCH INTO '18

AAPI Voting Age Population

