



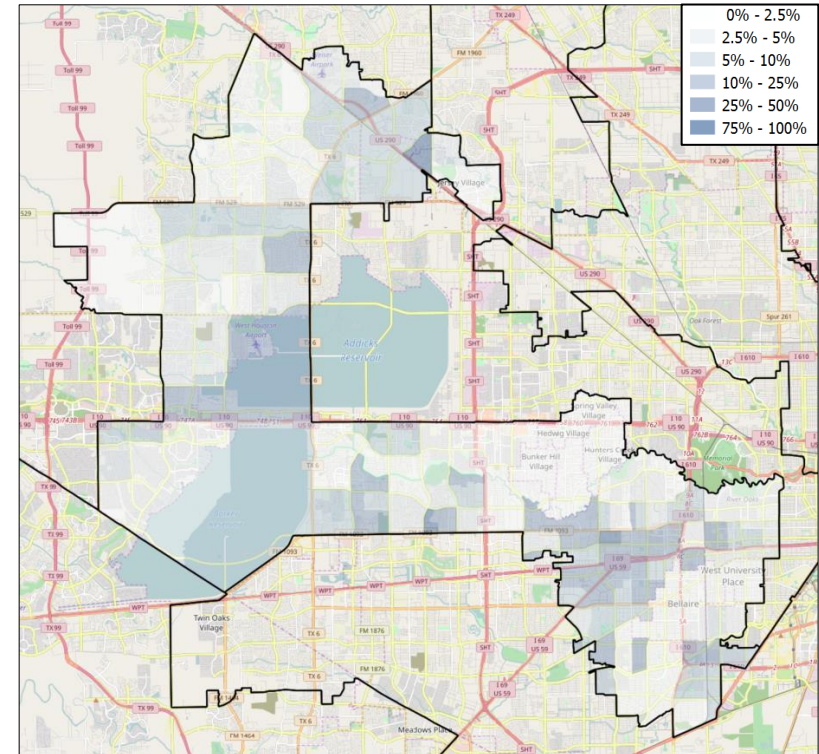
TX-07 VOTER REGISTRATION OPPORTUNITIES



DEMOGRAPHIC ANALYSIS

Group	Total	African American	Hispanic / Latino	Age 18-25
Voting Age Population	424,697	52,674	71,153	49,450
% of Population	100%	12.4%	16.8%	11.6%
Registered Voters	358,526	34,743	55,218	33,736
% of Voters	100%	9.7%	15.4%	9.4%
Unregistered Citizens	66,171	17,931	15,935	15,714
Projected Support	32.4%	68%	53.1%	36.6%

REGISTRATION OPPORTUNITY DENSITY



VOTER REGISTRATION TRENDS

Group	Total Reg #	% Dem	% Rep	% Ind	Reg Advantage	New Reg Turnout
OVERALL						
Current	358,526	32.3%	41.9%	15.2%	R+9.6%	55.1%
2014	373,672	33.3%	45.5%	15.0%	R+12.2%	30.6%
2012	357,010	30.3%	43.5%	12.9%	R+13.2%	58.2%
AGE 18 - 25						
Current	33,736	28.4%	26.8%	18.2%	D+1.6%	44.7%
2014	33,763	34.9%	43.0%	18.8%	R+8.1%	14.4%
2012	30,000	32.0%	40.1%	16.7%	R+8.2%	13.8%
AFRICAN AMERICAN						
Current	34,743	77.7%	4.7%	4.8%	D+73.0%	48.2%
2014	36,098	86.6%	4.9%	1.6%	D+81.7%	29.4%
2012	34,594	76.7%	5.2%	2.0%	D+71.5%	59.7%
HISPANIC / LATINO						
Current	55,218	53.2%	7.3%	24.4%	D+45.9%	53.6%
2014	53,800	57.7%	9.5%	27.1%	D+48.2%	21.0%
2012	48,998	51.1%	10.4%	25.7%	D+40.6%	51.9%

CHANGES IN PARTISANSHIP

