



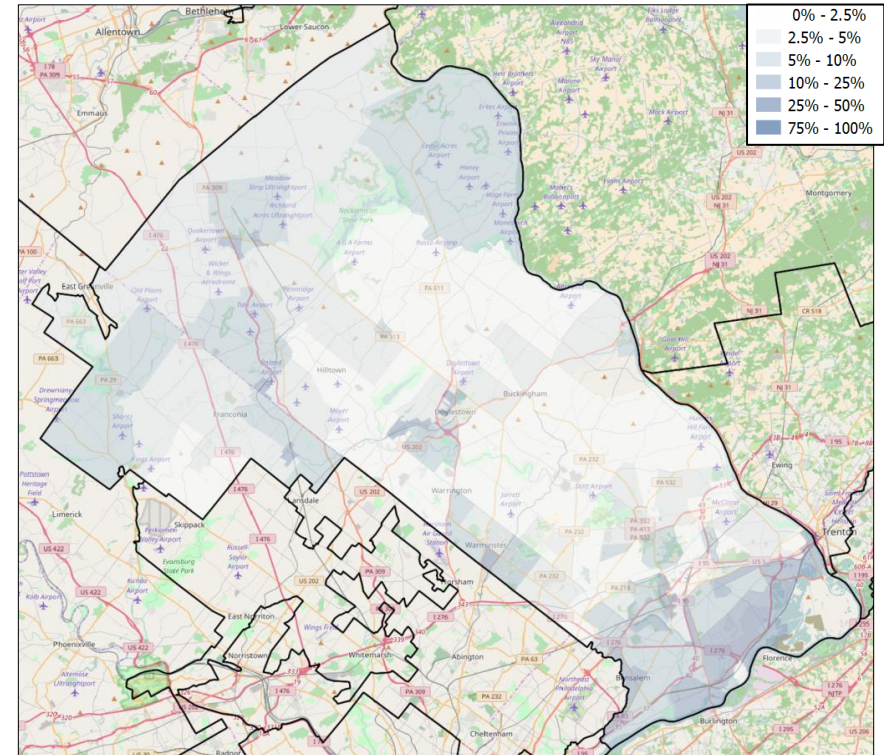
PA-08 VOTER REGISTRATION OPPORTUNITIES



DEMOGRAPHIC ANALYSIS

| Group | Total | African American | Hispanic / Latino | Age 18-25 |
|-----------------------|---------|------------------|-------------------|-----------|
| Voting Age Population | 538,540 | 16,495 | 14,719 | 54,887 |
| % of Population | 100% | 3.1% | 2.7% | 10.2% |
| Registered Voters | 476,841 | 8,533 | 8,978 | 43,179 |
| % of Voters | 100% | 1.8% | 1.9% | 9.1% |
| Unregistered Citizens | 61,699 | 7,962 | 5,741 | 11,708 |
| Projected Support | 46% | 89% | 65.4% | 45.6% |

REGISTRATION OPPORTUNITY DENSITY



VOTER REGISTRATION TRENDS

| Group | Total Reg # | % Dem | % Rep | % Ind | Reg Advantage | New Reg Turnout |
|--------------------------|-------------|-------|-------|-------|----------------|-----------------|
| OVERALL | | | | | | |
| Current | 476,841 | 41.7% | 42.6% | 15.7% | R+0.9% | 71.2% |
| 2014 | 483,156 | 42.2% | 41.4% | 16.4% | D+0.8% | 24.8% |
| 2012 | 488,337 | 42.4% | 41.9% | 15.7% | D+0.5% | 70.6% |
| AGE 18 - 25 | | | | | | |
| Current | 43,179 | 42.8% | 35.4% | 21.7% | D+7.4% | 66.8% |
| 2014 | 32,016 | 40.0% | 34.1% | 25.9% | D+5.8% | 19.7% |
| 2012 | 39,632 | 42.7% | 33.1% | 24.2% | D+9.6% | 34.5% |
| AFRICAN AMERICAN | | | | | | |
| Current | 8,572 | 84.2% | 5.6% | 10.3% | D+78.6% | 68.0% |
| 2014 | 11,060 | 85.4% | 5.4% | 9.2% | D+80.0% | 16.3% |
| 2012 | 10,832 | 86.1% | 5.1% | 8.9% | D+81.0% | 73.2% |
| HISPANIC / LATINO | | | | | | |
| Current | 9,024 | 59.9% | 20.1% | 20.0% | D+39.8% | 71.0% |
| 2014 | 13,655 | 53.4% | 26.9% | 19.7% | D+26.4% | 12.9% |
| 2012 | 13,929 | 53.1% | 27.4% | 19.5% | D+25.7% | 63.1% |

CHANGES IN PARTISANSHIP

