



PA-07 VOTER REGISTRATION OPPORTUNITIES



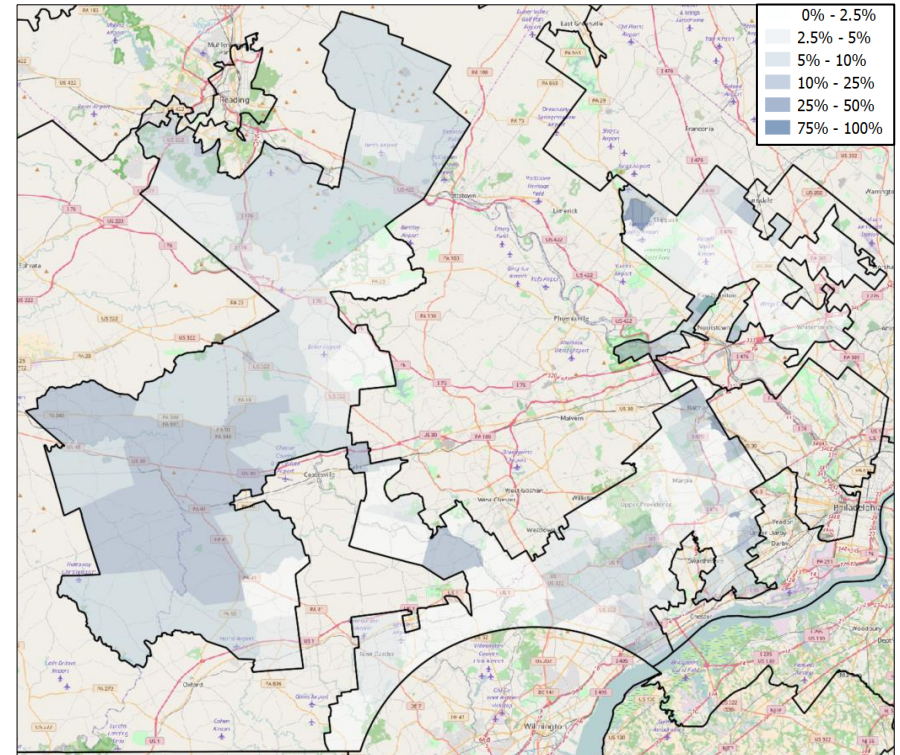
DEMOGRAPHIC ANALYSIS

Group	Total	African American	Hispanic / Latino	Age 18-25
Voting Age Population	534,059	23,646	9,506	62,158
% of Population	100%	4.4%	1.8%	11.6%
Registered Voters	467,565	10,250	5,328	44,941
% of Voters	100%	2.2%	1.1%	9.6%
Unregistered Citizens	66,494	13,396	4,178	17,217
Projected Support	42.2%	88.2%	60.9%	45.4%

VOTER REGISTRATION TRENDS

Group	Total Reg #	% Dem	% Rep	% Ind	Reg Advantage	New Reg Turnout
OVERALL						
Current	467,565	36.3%	49.8%	13.8%	R+13.6%	72.4%
2014	478,419	35.6%	50.0%	14.4%	R+14.4%	28.7%
2012	487,585	35.5%	50.8%	13.8%	R+15.3%	71.9%
AGE 18 - 25						
Current	44,941	40.8%	38.4%	20.5%	D+2.4%	68.4%
2014	34,359	38.4%	37.9%	23.7%	D+0.5%	23.8%
2012	43,109	40.9%	37.0%	22.2%	D+3.9%	36.1%
AFRICAN AMERICAN						
Current	10,271	81.3%	9.1%	9.6%	D+72.1%	66.2%
2014	14,311	80.5%	10.1%	9.4%	D+70.4%	22.5%
2012	12,811	80.7%	10.4%	8.9%	D+70.2%	76.2%
HISPANIC / LATINO						
Current	5,362	54.7%	23.9%	21.3%	D+30.8%	73.9%
2014	9,347	46.8%	34.4%	18.8%	D+12.4%	20.4%
2012	9,665	46.7%	34.9%	18.4%	D+11.8%	67.1%

REGISTRATION OPPORTUNITY DENSITY



CHANGES IN PARTISANSHIP

