



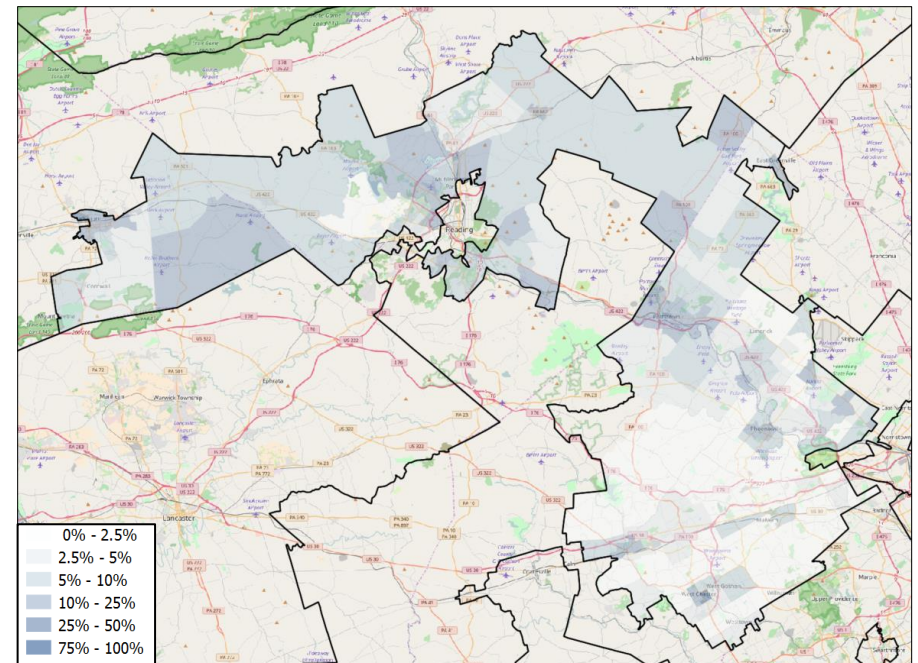
PA-06 VOTER REGISTRATION OPPORTUNITIES



DEMOGRAPHIC ANALYSIS

Group	Total	African American	Hispanic / Latino	Age 18-25
Voting Age Population	528,557	19,952	17,894	60,892
% of Population	100%	3.8%	3.4%	11.5%
Registered Voters	450,598	8,199	11,815	44,219
% of Voters	100%	1.8%	2.6%	9.8%
Unregistered Citizens	77,959	11,753	6,079	16,673
Projected Support	44%	88.6%	67.6%	45.9%

REGISTRATION OPPORTUNITY DENSITY



VOTER REGISTRATION TRENDS

Group	Total Reg #	% Dem	% Rep	% Ind	Reg Advantage	New Reg Turnout
OVERALL						
Current	450,598	39.3%	44.7%	16.0%	R+5.4%	71.1%
2014	462,015	39.3%	43.7%	17.0%	R+4.3%	24.6%
2012	469,159	39.7%	44.0%	16.4%	R+4.3%	71.2%
AGE 18 - 25						
Current	44,219	42.4%	35.1%	22.3%	D+7.2%	66.5%
2014	33,268	39.8%	33.7%	26.6%	D+6.1%	19.1%
2012	42,195	43.5%	32.2%	24.3%	D+11.4%	37.3%
AFRICAN AMERICAN						
Current	8,234	82.8%	6.8%	10.3%	D+76.0%	66.0%
2014	12,853	83.0%	6.7%	10.3%	D+76.4%	17.1%
2012	13,314	84.0%	6.0%	10.0%	D+78.0%	74.8%
HISPANIC / LATINO						
Current	11,890	62.8%	16.0%	21.1%	D+46.8%	58.8%
2014	15,983	56.4%	22.4%	21.3%	D+34.0%	10.6%
2012	15,870	56.6%	22.8%	20.6%	D+33.8%	59.8%

CHANGES IN PARTISANSHIP

