



NY-22 VOTER REGISTRATION OPPORTUNITIES



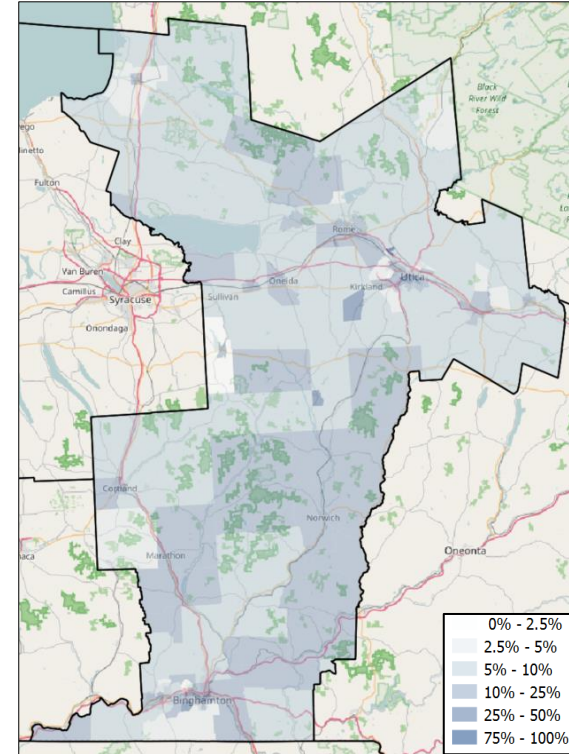
DEMOGRAPHIC ANALYSIS

Group	Total	African American	Hispanic / Latino	Age 18-25
Voting Age Population	550,366	16,891	12,275	82,996
% of Population	100%	3.1%	2.2%	15.1%
Registered Voters	391,196	5,208	4,380	33,626
% of Voters	100%	1.3%	1.1%	8.6%
Unregistered Citizens	159,170	11,683	7,895	49,370
Projected Support	42.9%	87.2%	73.9%	48.4%

VOTER REGISTRATION TRENDS

Group	Total Reg #	% Dem	% Rep	% Ind	Reg Advantage	New Reg Turnout
OVERALL						
Current	391,196	32.1%	39.6%	28.4%	R+7.5%	0.0%
2014	419,433	32.1%	39.1%	28.8%	R+7.1%	24.0%
2012	440,847	32.8%	39.7%	27.5%	R+6.9%	54.4%
AGE 18 - 25						
Current	33,626	34.6%	26.6%	38.8%	D+8.0%	0.0%
2014	37,863	32.2%	24.5%	43.3%	D+7.7%	15.2%
2012	41,111	35.3%	24.7%	40.0%	D+10.6%	20.2%
AFRICAN AMERICAN						
Current	5,208	71.5%	5.9%	22.6%	D+65.6%	0.0%
2014	7,456	72.2%	6.4%	21.4%	D+65.8%	10.2%
2012	7,797	73.0%	6.3%	20.6%	D+66.7%	50.7%
HISPANIC / LATINO						
Current	4,380	55.8%	13.1%	31.1%	D+42.7%	0.0%
2014	8,225	48.0%	20.7%	31.3%	D+27.3%	13.9%
2012	8,714	47.1%	21.5%	31.4%	D+25.7%	47.7%

REGISTRATION OPPORTUNITY DENSITY



CHANGES IN PARTISANSHIP

