



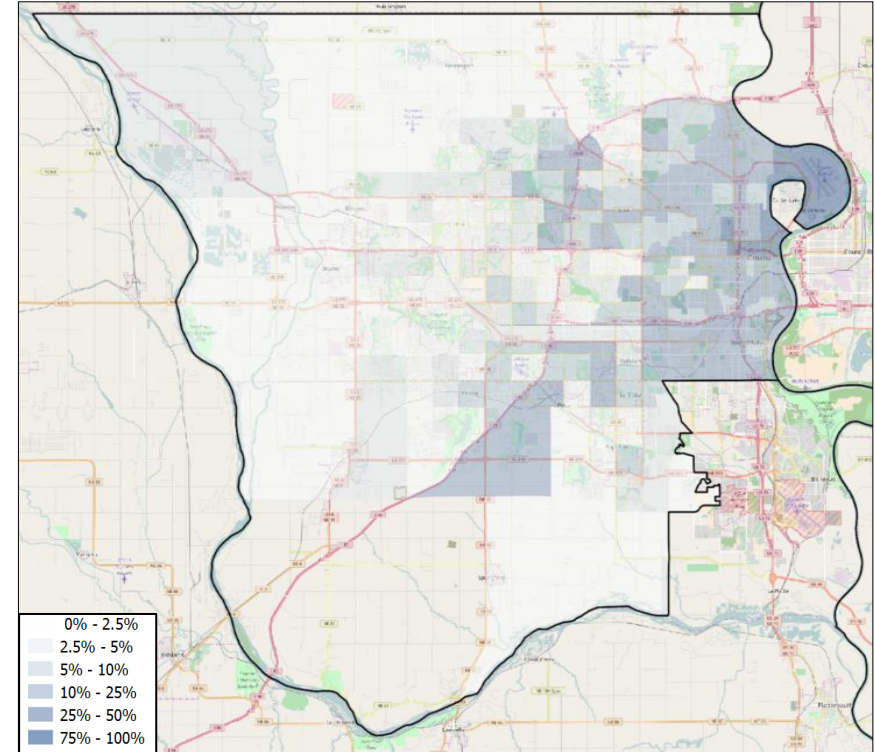
# NE-02 VOTER REGISTRATION OPPORTUNITIES



## DEMOGRAPHIC ANALYSIS

Group	Total	African American	Hispanic / Latino	Age 18-25
Voting Age Population	445,253	39,713	19,779	59,440
% of Population	100%	8.9%	4.4%	13.3%
Registered Voters	377,886	28,786	13,055	40,176
% of Voters	100%	7.6%	3.5%	10.6%
Unregistered Citizens	67,367	10,927	6,724	19,264
Projected Support	44.2%	89.8%	69.3%	42.7%

## REGISTRATION OPPORTUNITY DENSITY



## VOTER REGISTRATION TRENDS

Group	Total Reg #	% Dem	% Rep	% Ind	Reg Advantage	New Reg Turnout
<b>OVERALL</b>						
Current	377,886	36.1%	40.1%	23.8%	<b>R+4.0%</b>	63.6%
2014	384,700	35.7%	40.0%	24.3%	<b>R+4.3%</b>	27.8%
2012	377,730	36.9%	40.2%	22.9%	<b>R+3.3%</b>	65.7%
<b>AGE 18 - 25</b>						
Current	40,176	36.1%	32.4%	31.5%	<b>D+3.7%</b>	58.7%
2014	34,665	31.2%	34.2%	34.5%	<b>R+3.0%</b>	16.5%
2012	35,410	33.4%	33.9%	32.7%	<b>R+0.5%</b>	20.5%
<b>AFRICAN AMERICAN</b>						
Current	28,986	77.5%	6.1%	16.4%	<b>D+71.4%</b>	44.9%
2014	33,761	78.6%	5.8%	15.7%	<b>D+72.8%</b>	11.6%
2012	34,693	79.3%	5.5%	15.2%	<b>D+73.8%</b>	52.0%
<b>HISPANIC / LATINO</b>						
Current	13,216	58.4%	15.6%	26.0%	<b>D+42.8%</b>	64.6%
2014	14,527	49.1%	22.8%	28.1%	<b>D+26.4%</b>	14.8%
2012	13,795	49.0%	23.9%	27.1%	<b>D+25.2%</b>	53.7%

## CHANGES IN PARTISANSHIP

