



# MN-03 VOTER REGISTRATION OPPORTUNITIES



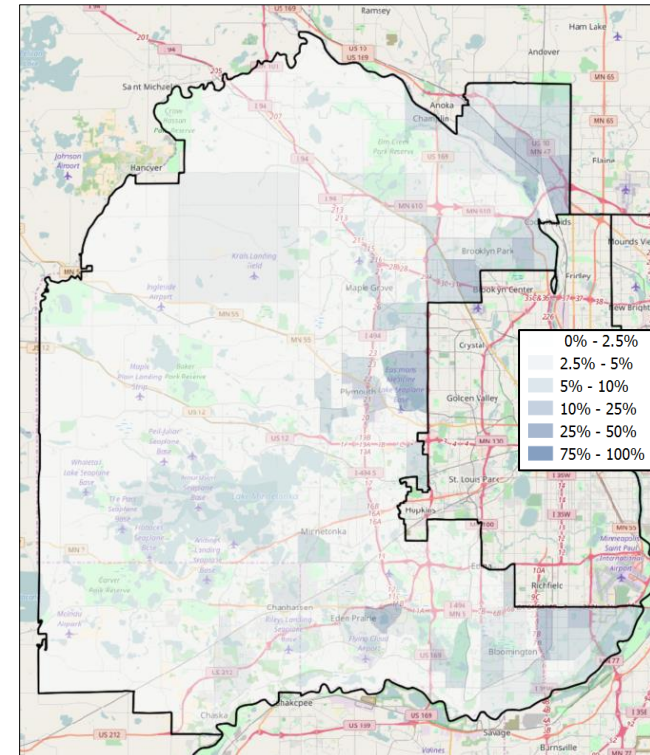
## DEMOGRAPHIC ANALYSIS

Group	Total	African American	Hispanic / Latino	Age 18-25
Voting Age Population	477,427	21,443	8,441	45,943
% of Population	100%	4.5%	1.8%	9.6%
Registered Voters	443,974	12,016	4,640	39,008
% of Voters	100%	2.7%	1%	8.8%
Unregistered Citizens	33,453	9,427	3,801	6,935
Projected Support	44.4%	83.2%	64.1%	43.6%

## VOTER REGISTRATION TRENDS

Group	Total Reg #	% Dem	% Rep	% Ind	Reg Advantage	New Reg Turnout
<b>OVERALL</b>						
Current	444,025	34.6%	36.9%	16.4%	<b>R+2.3%</b>	82.3%
2014	426,347	36.3%	39.8%	17.9%	<b>R+3.4%</b>	46.3%
2012	423,872	34.4%	37.4%	14.0%	<b>R+3.0%</b>	86.5%
<b>AGE 18 - 25</b>						
Current	39,142	16.5%	16.9%	20.1%	<b>R+0.4%</b>	78.9%
2014	33,228	26.6%	29.8%	35.1%	<b>R+3.2%</b>	27.9%
2012	34,403	29.5%	24.2%	24.3%	<b>D+5.3%</b>	17.5%
<b>AFRICAN AMERICAN</b>						
Current	12,140	73.3%	0.9%	3.2%	<b>D+72.4%</b>	77.1%
2014	10,927	87.4%	1.6%	2.1%	<b>D+85.8%</b>	30.5%
2012	10,392	74.0%	1.6%	2.0%	<b>D+72.3%</b>	82.3%
<b>HISPANIC / LATINO</b>						
Current	4,684	56.5%	6.4%	10.8%	<b>D+50.1%</b>	82.7%
2014	6,196	64.7%	12.3%	15.9%	<b>D+52.3%</b>	35.8%
2012	6,499	54.5%	11.5%	14.6%	<b>D+43.0%</b>	84.1%

## REGISTRATION OPPORTUNITY DENSITY



## CHANGES IN PARTISANSHIP

