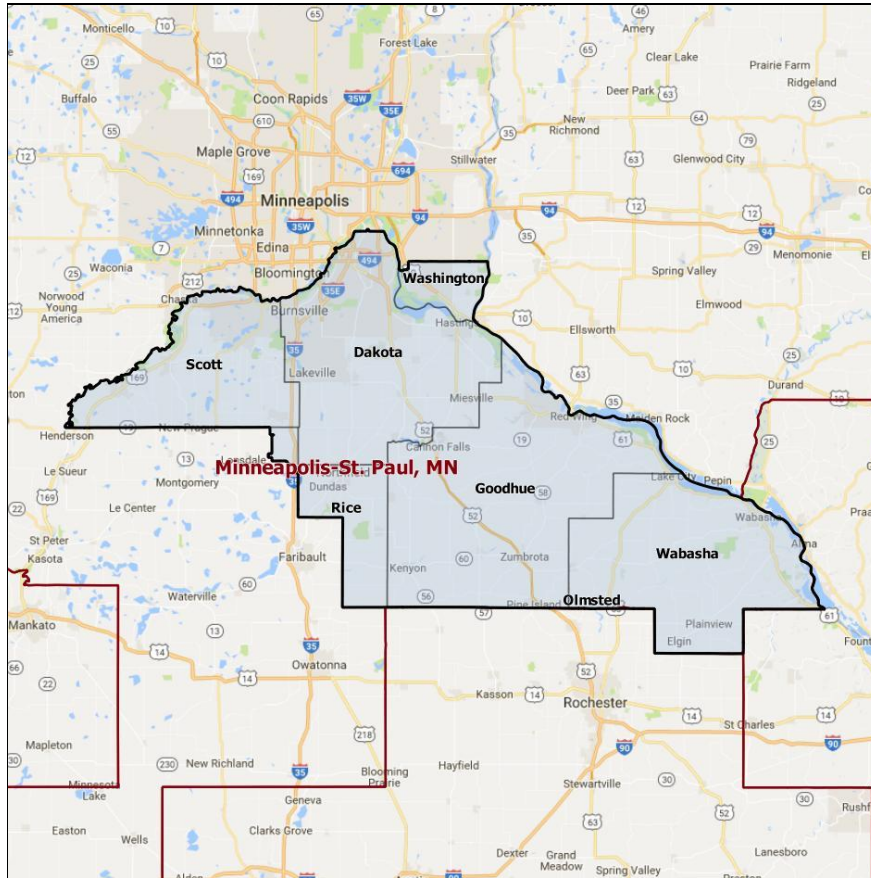


# MARCH INTO '18

## MN-02 Fact Sheet



### Recent Election Results Two-Way Vote

2016 Pres	2016 House	2014 Senate	2014 Gov	2014 House	2012 Pres	2012 Senate	2012 House	2008 Pres	2010 Gov
49.3%	49.0%	50.5%	48.4%	41.0%	50.0%	64.2%	45.9%	51.5%	44.1%

### Demographics

CVAP AfAm	CVAP AAPI	CVAP Hispanic	Age 18-35	Age 65+	Urban	Suburban	Rural	Mean Income	BA Degree or Higher
3.0%	3.3%	2.6%	21.5%	9.6%	4.4%	62.2%	33.4%	\$76,409	37.8%



# MARCH INTO '18

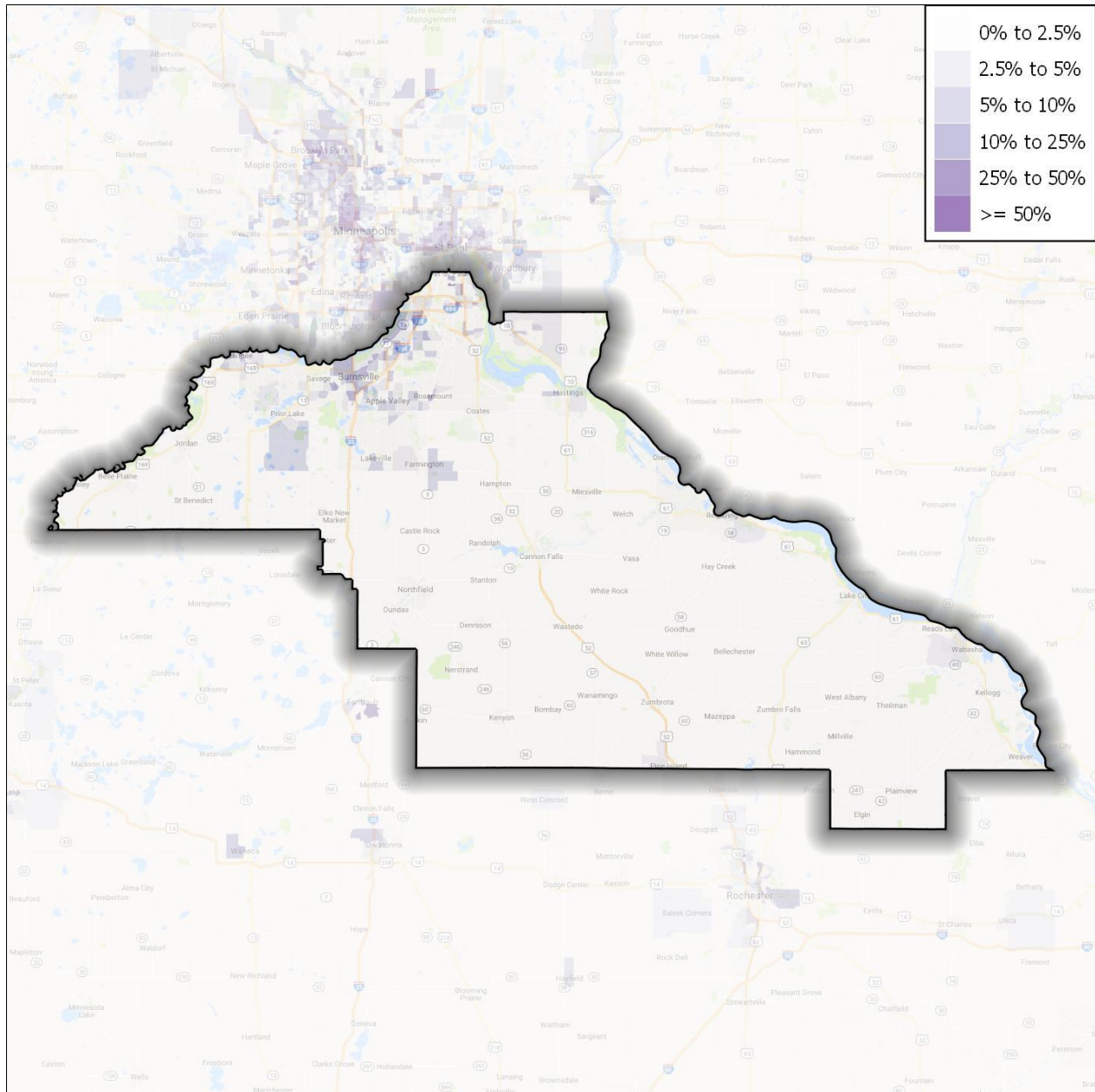
## Results / Voter Registration by Geography

County	2016 Pres.	2016 Cong.	Registered Voters	% of Total
Dakota	52.6%	51.4%	265,313	60.2%
Goodhue	40.2%	43.2%	30,151	6.8%
Rice	64.6%	64.3%	16,747	3.8%
Scott	41.6%	41.3%	86,854	19.7%
Wabasha	35.6%	42.3%	13,935	3.2%
Washington	50.0%	50.9%	27,436	6.2%

MARCH INTO '18

# Demographic Maps

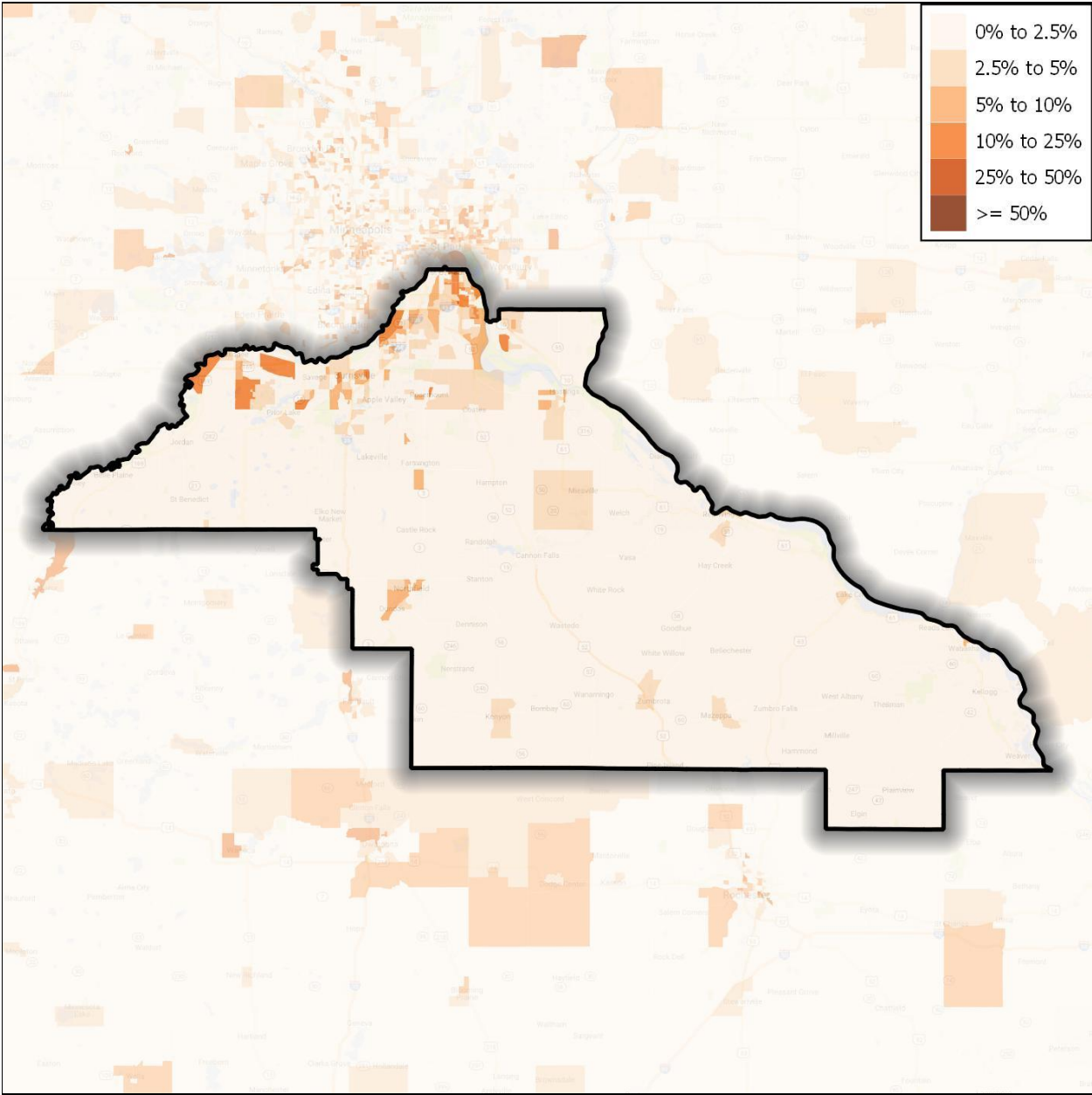
## African American Voting Age Population





# MARCH INTO '18

## Hispanic/Latino Voting Age Population





# MARCH INTO '18

## AAPI Voting Age Population

