



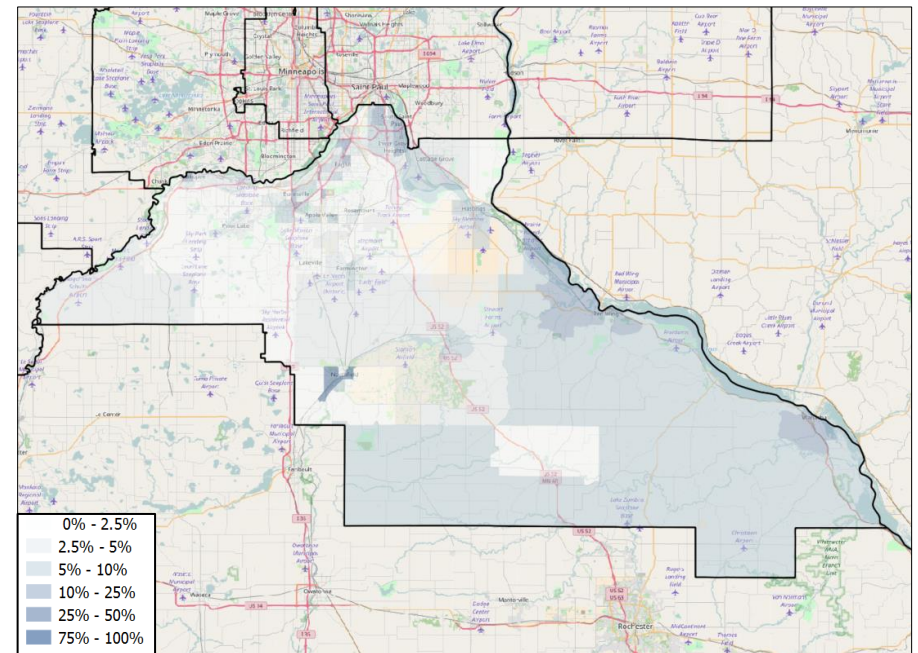
MN-02 VOTER REGISTRATION OPPORTUNITIES



DEMOGRAPHIC ANALYSIS

Group	Total	African American	Hispanic / Latino	Age 18-25
Voting Age Population	472,911	12,624	12,901	52,431
% of Population	100%	2.7%	2.7%	11.1%
Registered Voters	423,541	5,355	6,250	39,836
% of Voters	100%	1.3%	1.5%	9.4%
Unregistered Citizens	49,370	7,269	6,651	12,595
Projected Support	41.5%	81.8%	65.1%	42.2%

REGISTRATION OPPORTUNITY DENSITY



VOTER REGISTRATION TRENDS

Group	Total Reg #	% Dem	% Rep	% Ind	Reg Advantage	New Reg Turnout
OVERALL						
Current	423,398	30.2%	39.4%	17.7%	R+9.2%	84.0%
2014	405,260	32.0%	42.7%	19.5%	R+10.8%	44.3%
2012	414,723	30.0%	39.5%	15.9%	R+9.5%	85.9%
AGE 18 - 25						
Current	39,889	14.6%	17.2%	19.8%	R+2.7%	81.5%
2014	33,428	25.2%	31.2%	35.1%	R+6.1%	29.6%
2012	37,454	26.1%	24.9%	25.9%	D+1.2%	19.3%
AFRICAN AMERICAN						
Current	5,475	74.6%	1.1%	3.4%	D+73.5%	76.6%
2014	5,667	88.3%	2.0%	1.9%	D+86.3%	29.9%
2012	5,609	74.2%	1.9%	1.7%	D+72.2%	81.1%
HISPANIC / LATINO						
Current	6,404	55.4%	5.0%	11.3%	D+50.4%	83.4%
2014	8,301	67.7%	10.0%	15.3%	D+57.6%	35.2%
2012	8,754	56.4%	9.2%	13.9%	D+47.2%	81.6%

CHANGES IN PARTISANSHIP

