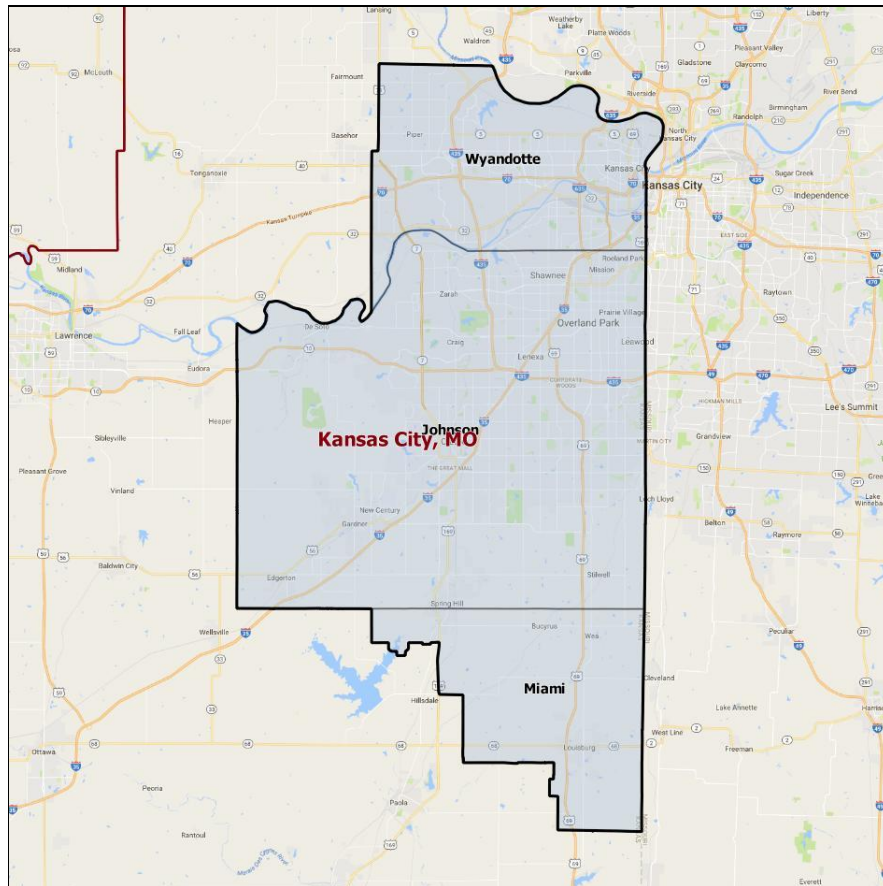


# MARCH INTO '18

## KS-03 Fact Sheet



### Recent Election Results Two-Way Vote

2016 Pres	2016 House	2014 House	2012 Pres	2012 House	2010 Senate	2010 Gov	2008 Pres	2008 Senate	2006 Gov
50.6%	44.2%	40.0%	45.1%	0.0%	35.7%	38.7%	49.5%	44.7%	65.4%

### Demographics

CVAP AfAm	CVAP AAPI	CVAP Hispanic	Age 18-35	Age 65+	Urban	Suburban	Rural	Mean Income	BA Degree or Higher
8.9%	2.5%	5.1%	22.4%	10.6%	4.1%	78.3%	17.6%	\$64,949	45.1%



# MARCH INTO '18

## Results / Voter Registration by Geography

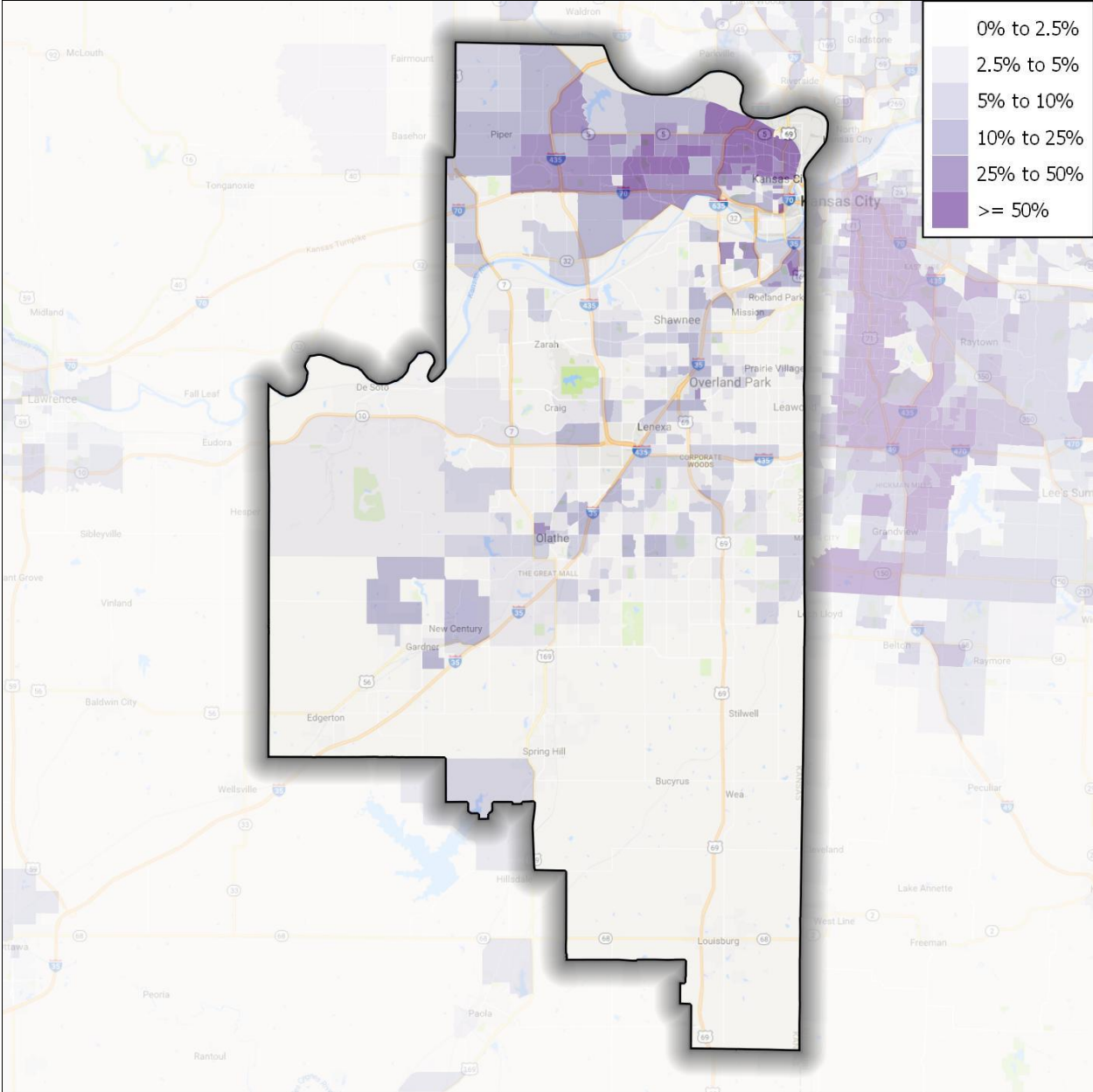
County	2016 Pres.	2016 Cong.	Registered Voters	% of Total
Johnson	48.5%	41.6%	395,579	82.4%
Miami	27.0%	26.7%	7,992	1.7%
Wyandotte	65.4%	62.3%	76,761	16.0%



# MARCH INTO '18

## Demographic Maps

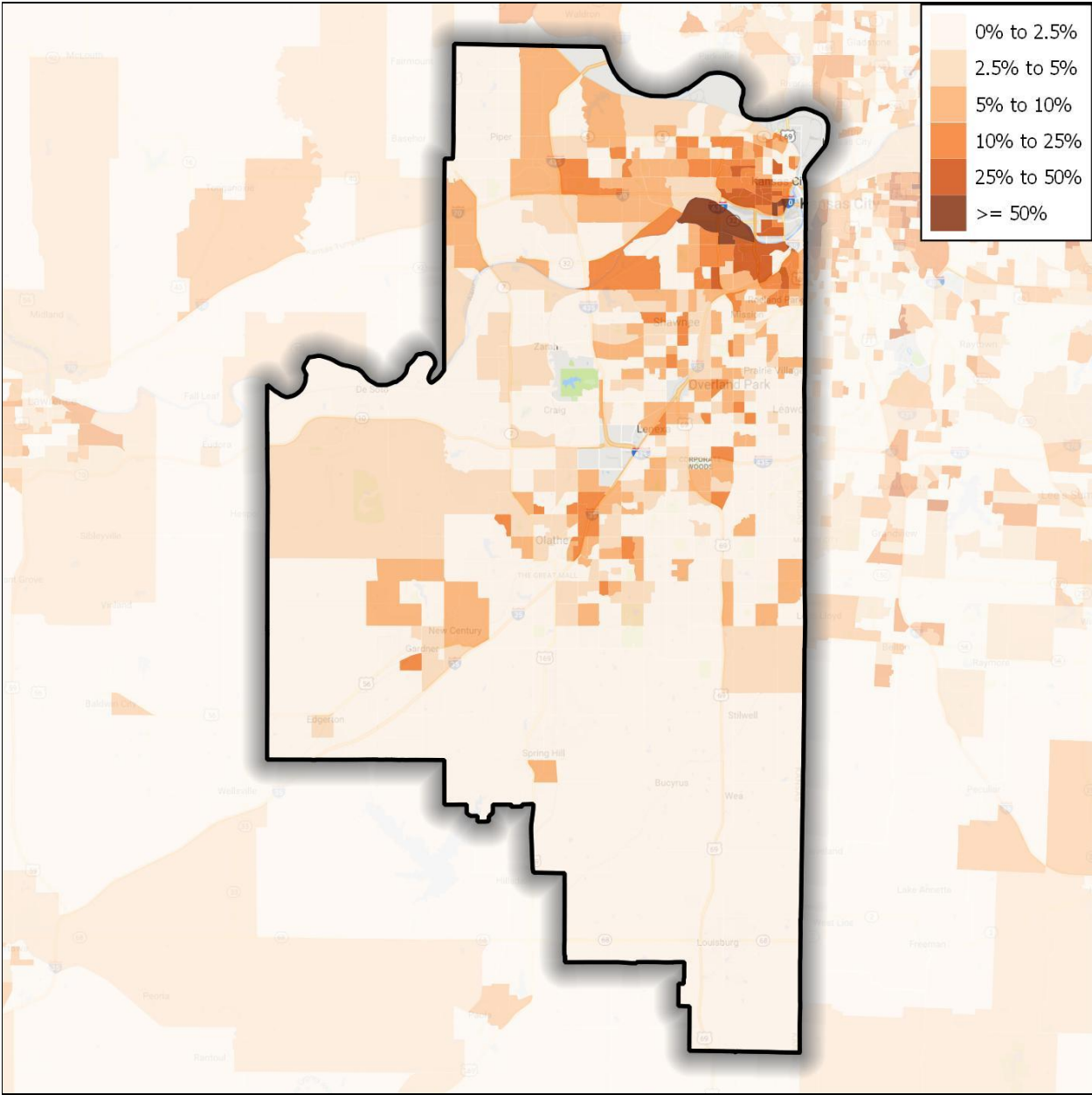
### African American Voting Age Population





# MARCH INTO '18

## Hispanic/Latino Voting Age Population





# MARCH INTO '18

## AAPI Voting Age Population

