



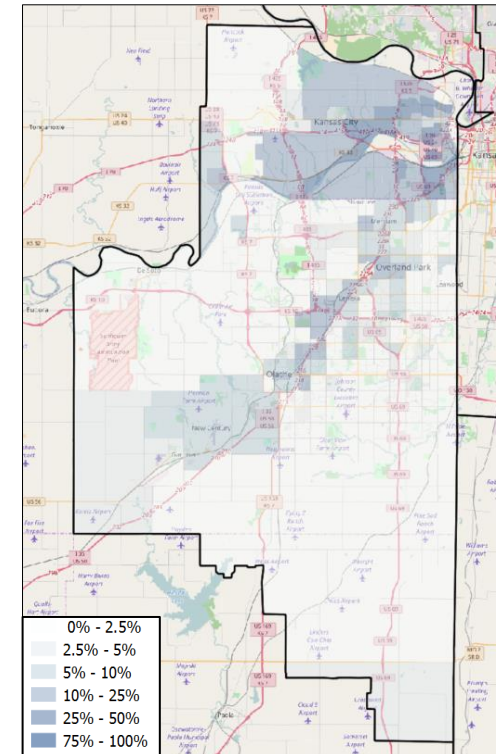
# KS-03 VOTER REGISTRATION OPPORTUNITIES



## DEMOGRAPHIC ANALYSIS

Group	Total	African American	Hispanic / Latino	Age 18-25
Voting Age Population	509,396	42,548	25,033	56,202
% of Population	100%	8.4%	4.9%	11%
Registered Voters	447,464	26,900	15,287	42,218
% of Voters	100%	6%	3.4%	9.4%
Unregistered Citizens	61,932	15,648	9,746	13,984
Projected Support	41.1%	88.9%	68.1%	43.1%

## REGISTRATION OPPORTUNITY DENSITY



## VOTER REGISTRATION TRENDS

Group	Total Reg #	% Dem	% Rep	% Ind	Reg Advantage	New Reg Turnout
<b>OVERALL</b>						
Current	447,589	28.6%	41.7%	29.7%	<b>R+13.2%</b>	61.7%
2014	470,381	27.6%	41.1%	31.4%	<b>R+13.5%</b>	35.2%
2012	474,297	28.1%	41.2%	30.7%	<b>R+13.1%</b>	65.7%
<b>AGE 18 - 25</b>						
Current	42,312	27.9%	31.5%	40.6%	<b>R+3.6%</b>	54.3%
2014	37,404	24.8%	31.6%	43.6%	<b>R+6.7%</b>	19.9%
2012	45,053	26.7%	31.3%	42.0%	<b>R+4.5%</b>	18.9%
<b>AFRICAN AMERICAN</b>						
Current	27,477	71.6%	4.5%	23.9%	<b>D+67.1%</b>	42.7%
2014	35,082	72.8%	4.2%	23.0%	<b>D+68.6%</b>	17.6%
2012	36,799	73.9%	4.0%	22.2%	<b>D+69.9%</b>	61.4%
<b>HISPANIC / LATINO</b>						
Current	16,099	45.4%	14.8%	39.8%	<b>D+30.6%</b>	55.4%
2014	19,957	40.3%	20.1%	39.5%	<b>D+20.2%</b>	20.0%
2012	19,967	40.4%	20.4%	39.2%	<b>D+20.0%</b>	57.2%

## CHANGES IN PARTISANSHIP

