



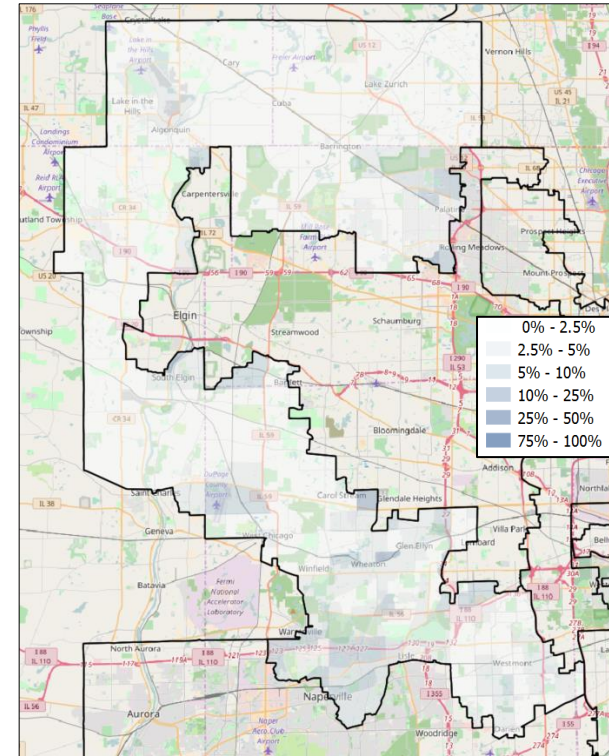
IL-06 VOTER REGISTRATION OPPORTUNITIES



DEMOGRAPHIC ANALYSIS

Group	Total	African American	Hispanic / Latino	Age 18-25
Voting Age Population	527,384	12,420	27,748	56,512
% of Population	100%	2.4%	5.3%	10.7%
Registered Voters	506,570	4,575	21,678	49,125
% of Voters	100%	0.9%	4.3%	9.7%
Unregistered Citizens	20,814	7,845	6,070	7,387
Projected Support	37.8%	77.8%	66.6%	40.1%

REGISTRATION OPPORTUNITY DENSITY



VOTER REGISTRATION TRENDS

Group	Total Reg #	% Dem	% Rep	% Ind	Reg Advantage	New Reg Turnout
OVERALL						
Current	506,570	24.7%	38.4%	26.9%	R+13.7%	65.1%
2014	505,234	25.1%	40.8%	29.8%	R+15.6%	37.7%
2012	502,526	24.0%	39.0%	25.4%	R+15.0%	61.5%
AGE 18 - 25						
Current	49,125	13.0%	16.9%	24.5%	R+4.0%	55.4%
2014	38,927	20.9%	32.2%	44.3%	R+11.3%	17.0%
2012	39,135	24.6%	29.6%	38.9%	R+5.0%	14.2%
AFRICAN AMERICAN						
Current	4,807	74.3%	5.6%	6.8%	D+68.8%	55.0%
2014	5,455	84.3%	8.9%	2.3%	D+75.4%	35.6%
2012	5,027	73.9%	8.7%	2.4%	D+65.2%	61.7%
HISPANIC / LATINO						
Current	22,897	57.3%	9.9%	18.0%	D+47.4%	58.8%
2014	26,240	61.1%	15.1%	20.3%	D+46.0%	22.6%
2012	25,576	55.9%	15.2%	18.9%	D+40.8%	50.7%

CHANGES IN PARTISANSHIP

