



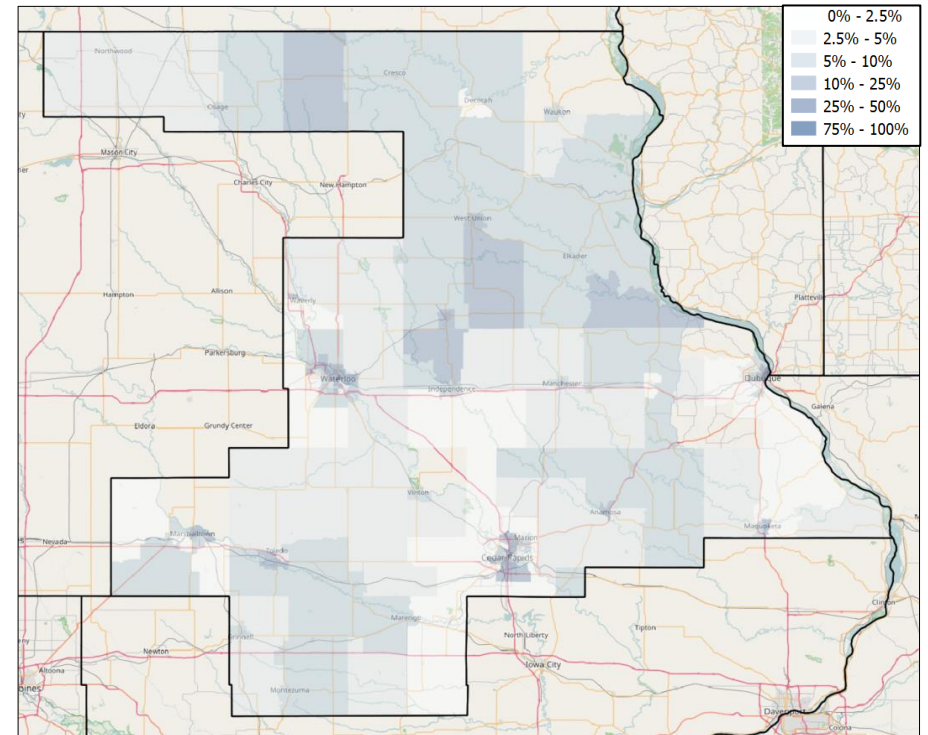
IA-01 VOTER REGISTRATION OPPORTUNITIES



DEMOGRAPHIC ANALYSIS

Group	Total	African American	Hispanic / Latino	Age 18-25
Voting Age Population	578,105	16,387	9,207	79,536
% of Population	100%	2.8%	1.6%	13.8%
Registered Voters	505,516	8,352	5,079	56,631
% of Voters	100%	1.7%	1%	11.2%
Unregistered Citizens	72,589	8,035	4,128	22,905
Projected Support	50.6%	90.7%	71.1%	49.9%

REGISTRATION OPPORTUNITY DENSITY



VOTER REGISTRATION TRENDS

Group	Total Reg #	% Dem	% Rep	% Ind	Reg Advantage	New Reg Turnout
OVERALL						
Current	501,029	32.7%	28.8%	38.4%	D+3.9%	70.5%
2014	535,371	32.7%	27.0%	40.3%	D+5.6%	42.3%
2012	549,923	33.3%	27.1%	39.6%	D+6.1%	77.3%
AGE 18 - 25						
Current	55,966	26.6%	22.5%	50.9%	D+4.1%	68.7%
2014	56,613	25.3%	19.9%	54.8%	D+5.3%	31.7%
2012	65,190	28.5%	19.8%	51.7%	D+8.7%	34.1%
AFRICAN AMERICAN						
Current	8,281	72.1%	3.7%	24.3%	D+68.4%	56.3%
2014	12,863	69.9%	4.6%	25.5%	D+65.4%	24.3%
2012	13,476	69.9%	4.4%	25.7%	D+65.6%	67.0%
HISPANIC / LATINO						
Current	5,066	45.6%	10.2%	44.2%	D+35.4%	70.8%
2014	8,166	40.1%	15.1%	44.9%	D+25.0%	28.4%
2012	8,388	40.2%	15.5%	44.3%	D+24.8%	69.6%

CHANGES IN PARTISANSHIP

