



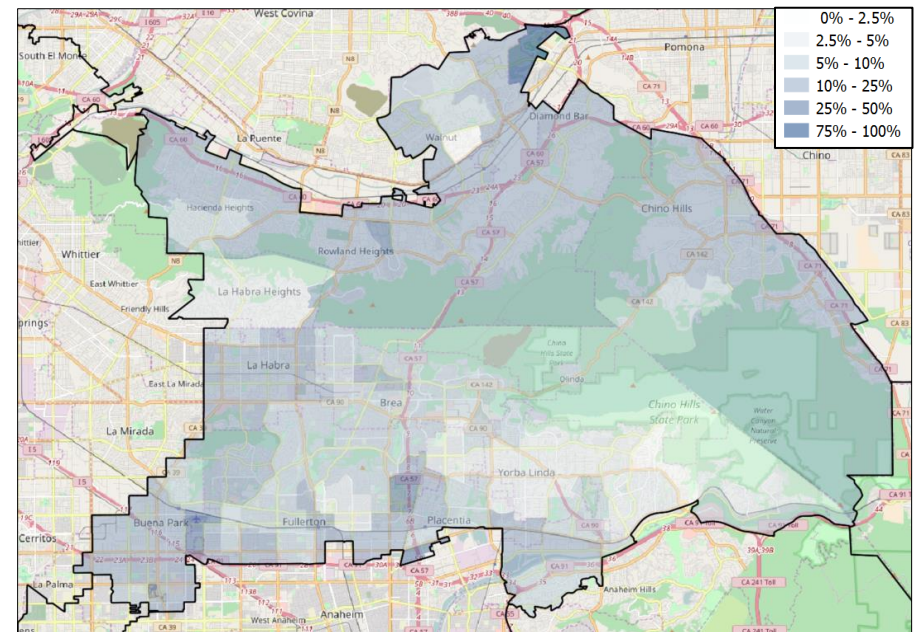
CA-39 VOTER REGISTRATION OPPORTUNITIES



DEMOGRAPHIC ANALYSIS

Group	Total	African American	Hispanic / Latino	Age 18-25
Voting Age Population	442,150	12,973	111,035	60,570
% of Population	100%	2.9%	25.1%	13.7%
Registered Voters	341,347	8,646	85,647	37,175
% of Voters	100%	2.5%	25.1%	10.9%
Unregistered Citizens	100,803	4,327	25,388	23,395
Projected Support	47.6%	78.5%	66.6%	54.1%

REGISTRATION OPPORTUNITY DENSITY



VOTER REGISTRATION TRENDS

Group	Total Reg #	% Dem	% Rep	% Ind	Reg Advantage	New Reg Turnout
OVERALL						
Current	366,490	34.4%	36.1%	29.5%	R+1.8%	0.0%
2014	349,694	32.4%	38.5%	29.1%	R+6.1%	31.7%
2012	389,064	32.3%	39.4%	28.3%	R+7.2%	68.4%
AGE 18 - 25						
Current	45,301	36.6%	25.5%	37.9%	D+11.1%	0.0%
2014	35,573	29.2%	28.7%	42.1%	D+0.4%	16.7%
2012	42,490	29.6%	27.9%	42.5%	D+1.8%	19.1%
AFRICAN AMERICAN						
Current	9,279	61.2%	13.9%	24.9%	D+47.3%	0.0%
2014	7,134	68.8%	10.8%	20.4%	D+58.0%	30.4%
2012	8,455	69.2%	10.5%	20.3%	D+58.7%	71.3%
HISPANIC / LATINO						
Current	94,990	50.6%	22.5%	26.9%	D+28.1%	0.0%
2014	89,166	47.5%	26.3%	26.2%	D+21.3%	23.6%
2012	97,353	46.9%	26.6%	26.5%	D+20.3%	65.7%

CHANGES IN PARTISANSHIP

