



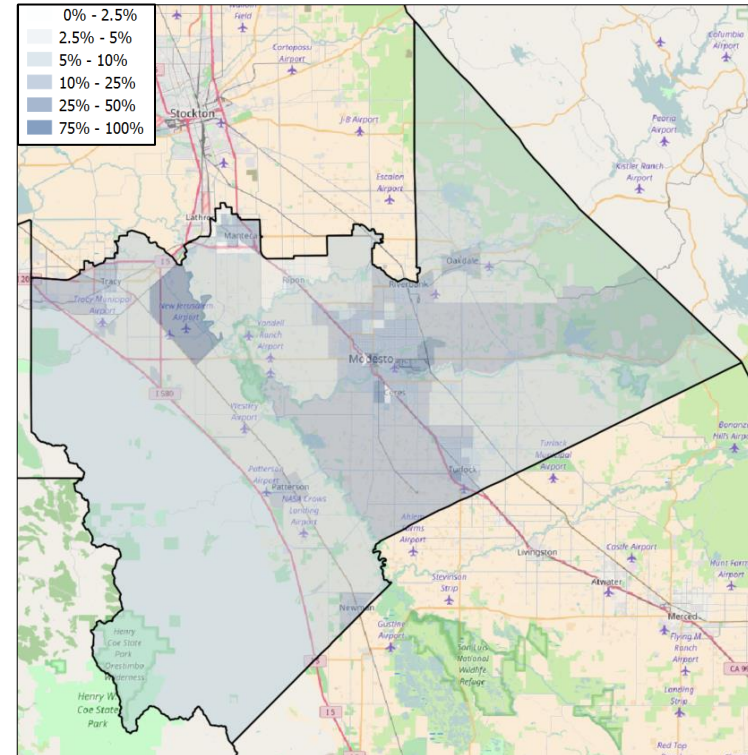
# CA-10 VOTER REGISTRATION OPPORTUNITIES



## DEMOGRAPHIC ANALYSIS

Group	Total	African American	Hispanic / Latino	Age 18-25
Voting Age Population	422,722	16,063	116,039	59,016
% of Population	100%	3.8%	27.5%	14%
Registered Voters	315,073	9,001	87,233	35,397
% of Voters	100%	2.9%	27.7%	11.2%
Unregistered Citizens	107,649	7,062	28,806	23,619
Projected Support	50.5%	78.4%	68.5%	54%

## REGISTRATION OPPORTUNITY DENSITY



## VOTER REGISTRATION TRENDS

Group	Total Reg #	% Dem	% Rep	% Ind	Reg Advantage	New Reg Turnout
<b>OVERALL</b>						
Current	338,437	38.8%	36.5%	24.8%	<b>D+2.3%</b>	0.0%
2014	292,815	37.1%	40.0%	22.9%	<b>R+2.9%</b>	30.0%
2012	306,996	39.7%	38.9%	21.4%	<b>D+0.8%</b>	63.4%
<b>AGE 18 - 25</b>						
Current	41,819	36.8%	26.3%	36.9%	<b>D+10.4%</b>	0.0%
2014	33,008	25.9%	38.7%	35.5%	<b>R+12.8%</b>	14.6%
2012	35,480	30.8%	37.1%	32.1%	<b>R+6.3%</b>	15.5%
<b>AFRICAN AMERICAN</b>						
Current	9,652	64.0%	15.3%	20.7%	<b>D+48.7%</b>	0.0%
2014	8,427	68.3%	15.9%	15.8%	<b>D+52.4%</b>	25.4%
2012	9,371	71.3%	13.3%	15.4%	<b>D+57.9%</b>	66.7%
<b>HISPANIC / LATINO</b>						
Current	96,521	53.0%	21.2%	25.8%	<b>D+31.8%</b>	0.0%
2014	82,326	48.1%	28.5%	23.3%	<b>D+19.6%</b>	21.7%
2012	84,893	51.9%	26.6%	21.5%	<b>D+25.3%</b>	58.2%

## CHANGES IN PARTISANSHIP

